

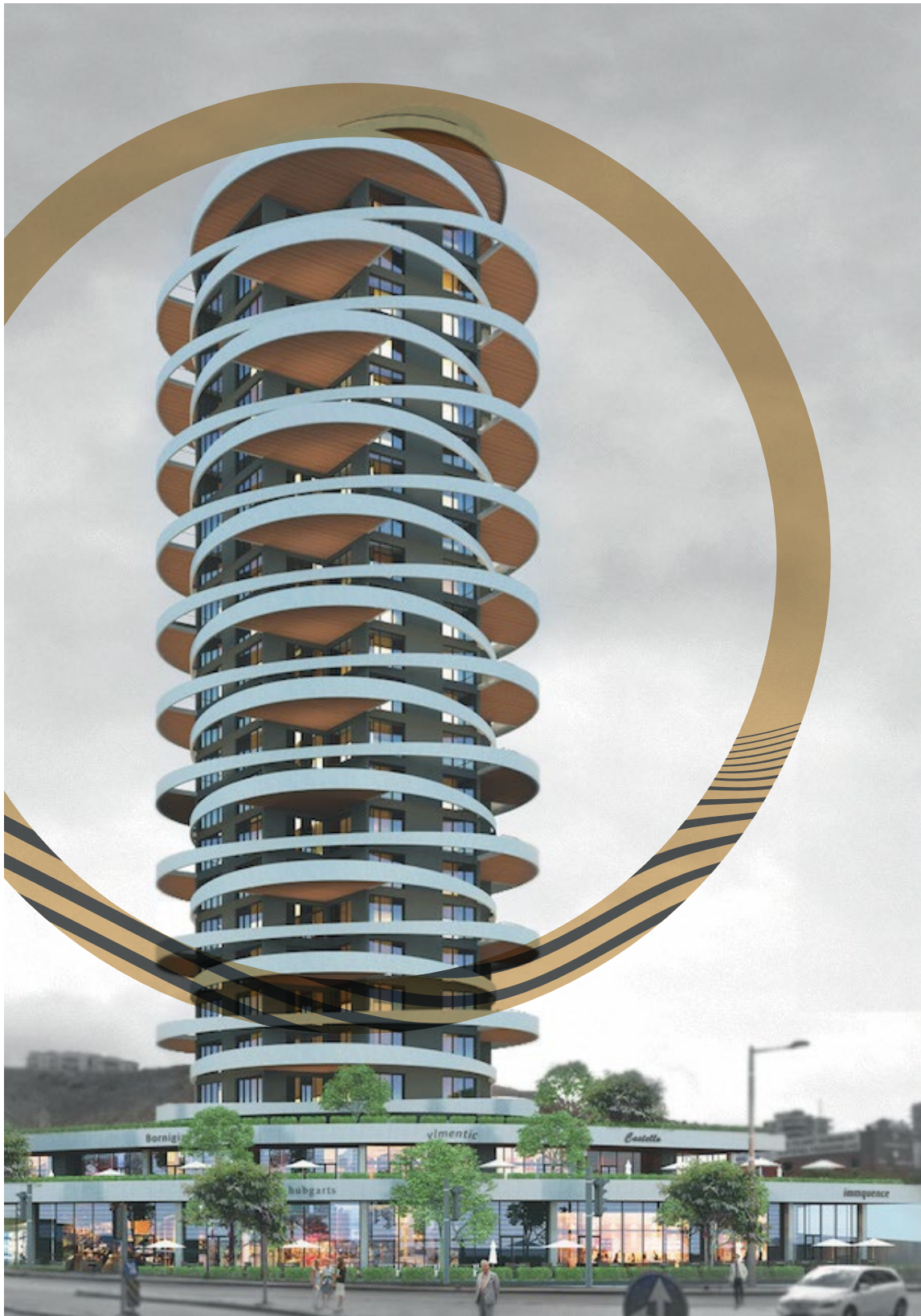


01 Introduction

ŞA-RA, with its pioneer and innovative identification, associated its reputation with high quality throughout the world since 1985. **ŞA-RA** has a leading position in the field of energy transmission and distribution, with its experienced and specialized team, modern facilities and especially with its management principles that value people and social responsibility.

ŞA-RA is one of the most prominent companies in the world, through its design team that can annually design and conduct type tests of hundreds of towers, its contracting team that can simultaneously execute more than 30 turnkey projects, and its manufacturing capacity of a total of 638,500 tons.





02 Factories

ŞA-RA Energy performs its production activities in 13 industrial factories with a total of 480,000 m² outdoor and 150,000 m² indoor area. 10 of these factories are based in the Adana facility and 3 are based in the Ankara facility.

ŞA-RA, through its high production capacity and provision of employment for more than 2,000 workers, is one of Turkey's largest 200 industrial enterprises.

ŞA-RA conducts export operations in a short time and in the best manner thanks to its experienced foreign trade team and its factories located approx. 60 kilometers from Turkey's 3 most important ports. It supports this attribute with a wide sales network and an experienced marketing staff as it has accomplished to become one of Turkey's most important exporters with its annual foreign figures exceeding 100 million US dollars to more than 120 countries.





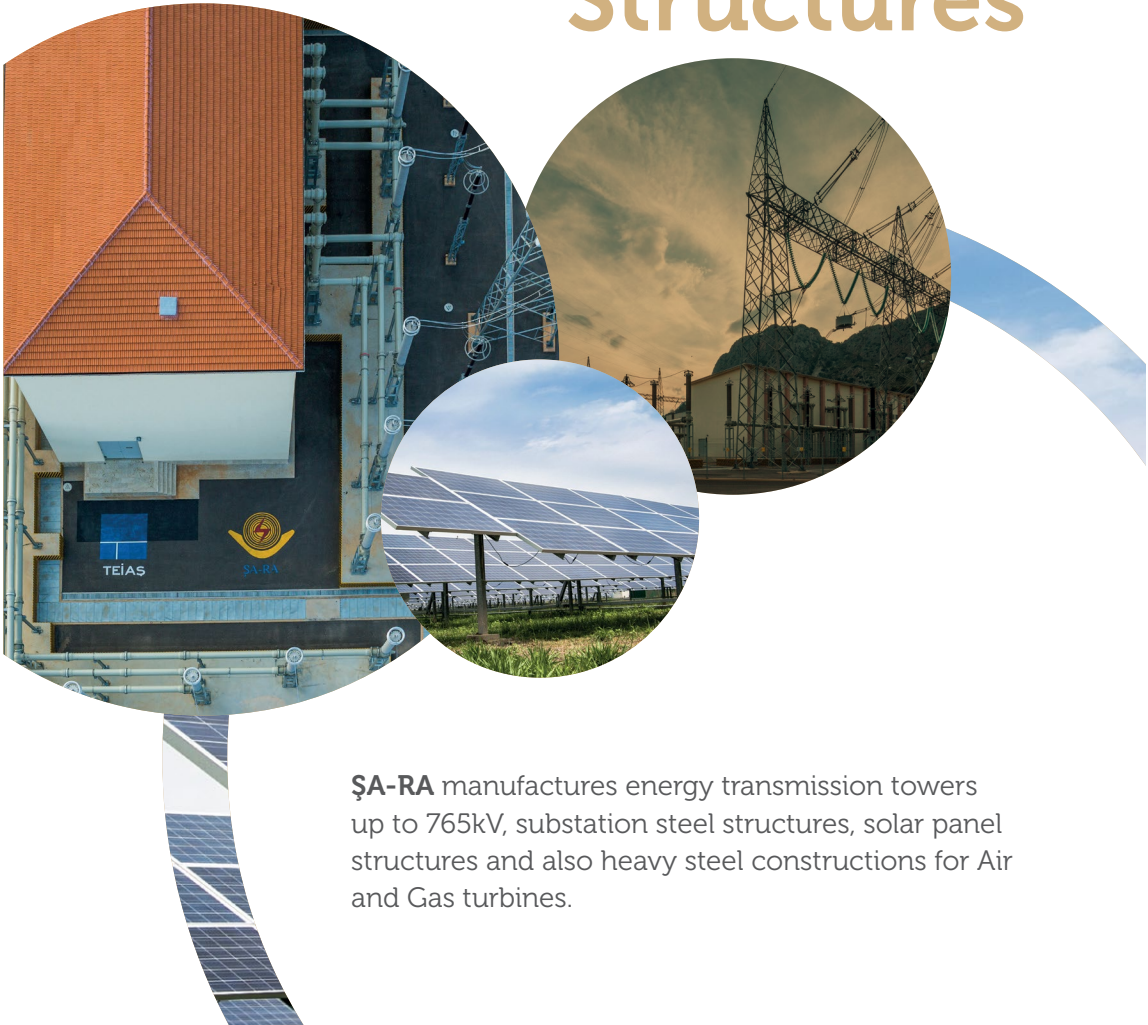
03

Energy Transmission Line Towers/ Poles

ŞA-RA Energy Transmission Line Tower Factory, with an annual steel manufacturing capacity of 200,000 tons is the biggest plant in Europe and The Middle East. The factory is one of the most modern and pioneer facilities in its field with its CNC benches, capabilities of manufacturing and welding according to European, American, and Canadian standards.

04

Substation, Solar Panel and Heavy Steel Structures



ŞA-RA manufactures energy transmission towers up to 765kV, substation steel structures, solar panel structures and also heavy steel constructions for Air and Gas turbines.

05 Hardware/ Fittings



ŞA-RA's Hardware Factory in the Adana facility manufactures insulator/conductor hardware and dampers up to 765kV. This factory has an annual production capacity of 12,000 tons with its casting mold and jig manufacturing plant, forging, casting, and machining ateliers, electrostatic powder coat oven and electro polishing lines.

The type and factory acceptance tests either mechanical or electrical that examine the compatibility of the products to specifications are carried out within our own laboratories.





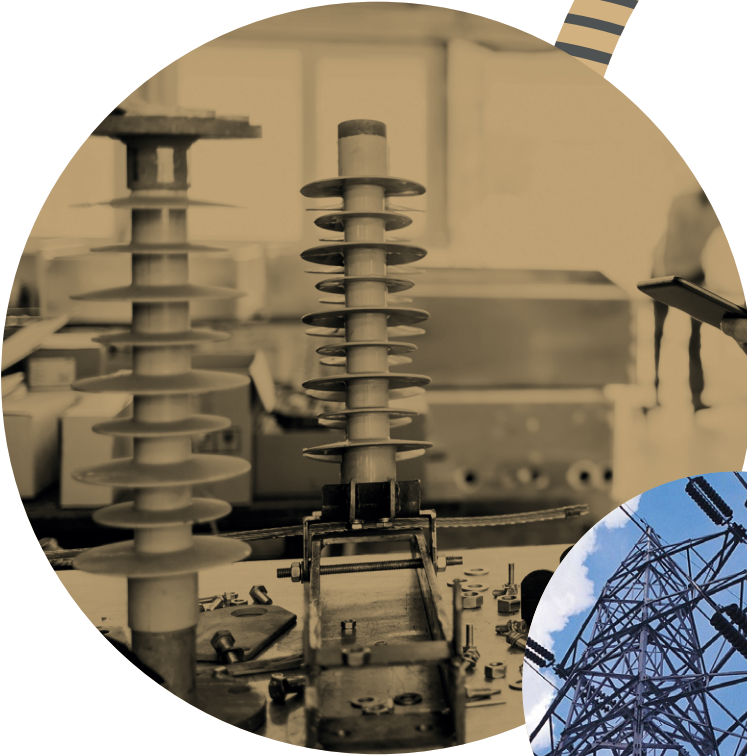
06

Fasteners

ŞA-RA's Bolt Factory provides services with its 24,000 tons manufacturing capacity and up to 12.9 quality, and M52 diameter product range; used in automotive, defense industry, heavy equipment, infrastructure, and many other industrial sectors.

Having more than 30 automatic cold and hot manufacturing benches, automatic heat treatment ovens, galvanization facility, its own jig and casting mold manufacturing plant, testing and control labs, control instruments with laser measurement abilities that provide zero error by 100% checking; this factory is one of the most important integrated investments in the region.

07 Silicon Insulator



Our Silicon Insulator Factory, located in the Adana facility has an annual production capacity of 2,500 tons and can manufacture insulators up to a length of 4.5 meters in a single process.



08

Conductor and Cable

The Conductor, Cable and Aluminum Rod Wire Factory, established in the Adana facility has an annual capacity of 48,000 tons and below product range.

- Aluminum Wire Rod
- Aluminum Wire
- AAC Full Aluminum Conductors
- ACSR Steel Core Aluminum Conductors
- AACSR Steel Core Aluminum Alloy Conductors
- ACAR Alloy Core Aluminum Conductors

09 Polygonal & Circular Poles



ŞA-RA's Pole Factory in the Ankara facility manufactures, lighting poles, high masts, flag poles, traffic light poles and sign steel structures. The annual capacity of this factory is 18,000 tons.



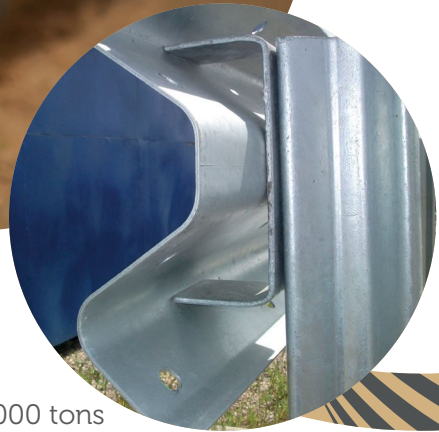
10

GSM and Telecommunication Towers / Monopoles

ŞA-RA is a well- known designer and manufacturer of GSM/ Telecommunication Towers and Monopoles. **ŞA-RA** is the supplier of most known GSM operators in addition to Defense and Communication utilities.

All accessories like antenna apparatus, aircraft warning lights, lightning arresters and cable trays etc. can be supplied by **ŞA-RA**.

11 Guardrail



ŞA-RA's Guardrail Factory has a 48,000 tons annual production capacity.

ŞA-RA owns licensed designs and CE certificated performance systems. We have a wide system library for all terrain and bridges.

A photograph of an industrial galvanization facility. In the foreground, a large, dark, curved metal part is being processed, with bright sparks or steam rising from it. In the background, a series of long, horizontal metal beams are suspended by a yellow crane system. The facility has a high ceiling with a complex network of steel trusses and skylights. The overall scene is industrial and dynamic.

12

Galvanization

High quality galvanized coating is provided in 4 fully closed and automated galvanizing facilities with a total annual production capacity of 286,000 tons.

The facilities provide optimized coating thickness and quality by means of a computerized process control system. Steel parts up to 12 meters long can be galvanized in one drop.

13 Design/ Engineering



Our company serves its customers with an experienced design team that performs many new tower and structure designs, type tests and line designs. Research and development offices which target continuous development are based in the Head Office and in the Adana facility.



14

Quality

ŞA-RA inspects the entire raw material, all stages of manufacturing process, packaging, and dispatch in accordance with latest standards via its experienced and independent quality control, environment and health and security teams.

It offers quality assurance and control activities with quality management certificates such as CE, OHSAS 18001, ISO EN 14001, ISO EN 9001, ISO TS 16949 and alike.



15 EPC (Engineering Procurement Construction)

ŞA-RA is the only company in Turkey and one of the few in the world with the capability of producing complete variety of line materials and simultaneously provide turnkey construction services in the areas of power transmission lines, open and gas insulated substations, back-to-back converter stations, energy distribution systems and telecommunication projects.





ŞA-RA completes more than 500 km, high voltage OHTLs in EPC contracts every year.

ŞA-RA is the first Turkish company which undertook the project of "Van Back to Back Converter Station" as the first project in Turkey to be constructed for the purpose of transnational energy connection.





ŞA-RA Headquarters

Ümit Mahallesi, 2479 Cadde, No:2 Nokta
Ankara, 06810 Çankaya / Ankara / Türkiye
Phone: +90 312 285 24 24
Fax: +90 312 285 24 28

ŞA-RA Ankara Facility

Eski Haymana Yolu, 600. mt
06900 Polatlı / Ankara / Türkiye

ŞA-RA Adana Facilities

Ceyhan Yolu, 30 km
01220 Yüreğir / Adana / Türkiye

www.sara.com.tr
info@sara.com.tr

 /sarasirketlergrubu
 /sarasirketlergrubu
 /sarasirketlergrubu
 /sarasirketler

